



# Achievements of the Global Laboratory Initiative (GLI) Stop TB Partnership Working Group

Rick O'Brien  
Chair, GLI Working Group

4<sup>th</sup> GLI Partners Meeting  
Les Pensières, Veyrier-du-Lac, France  
17 - 19 April 2012



# Stop TB Partnership Workgroups (WG)

- DOTS Expansion WG
- TB/HIV WG
- MDRTB WG
- New Diagnostics WG
- WG on New TB Drugs
- WG on New TB Vaccines
- Global Laboratory Initiative WG (Nov 08)

# A Brief History of the GLI

- Establishment of SRLs in support of drug resistance surveys (mid-1990s)
- Establishment of Laboratory Capacity Strengthening Sub-group of DEWH (2002)
- Establishment of SLCS Core Group (2007)
- Development of GLI Business Plan (2007-8)
- Endorsement by STP CB and STAG of GLI WG (2008)



# Global Laboratory Initiative

---

Platform of coordination and communication, providing the required infrastructure, focused on TB laboratory strengthening, in the areas of:

- Global policy guidance (norms, standards, best practices)
- Laboratory capacity development
- Interface with other laboratory networks, enabling integration
- Standardised laboratory quality assurance
- Coordination of technical assistance
- Effective knowledge sharing
- Advocacy and resource mobilisation



# GLI strategic priorities

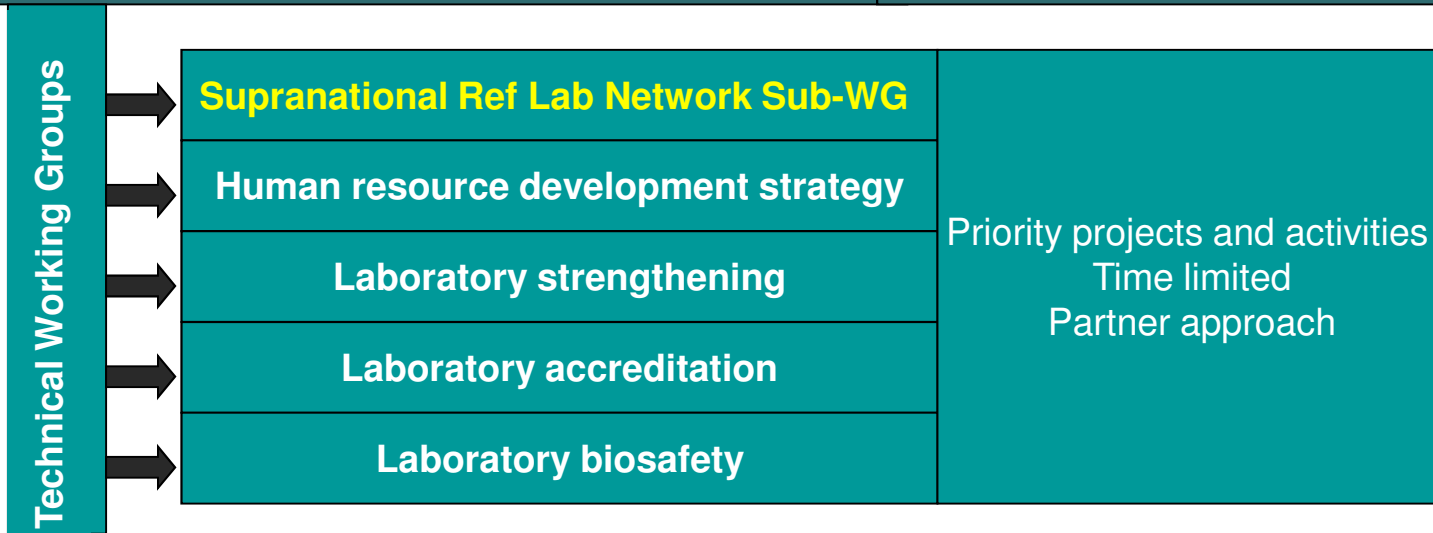
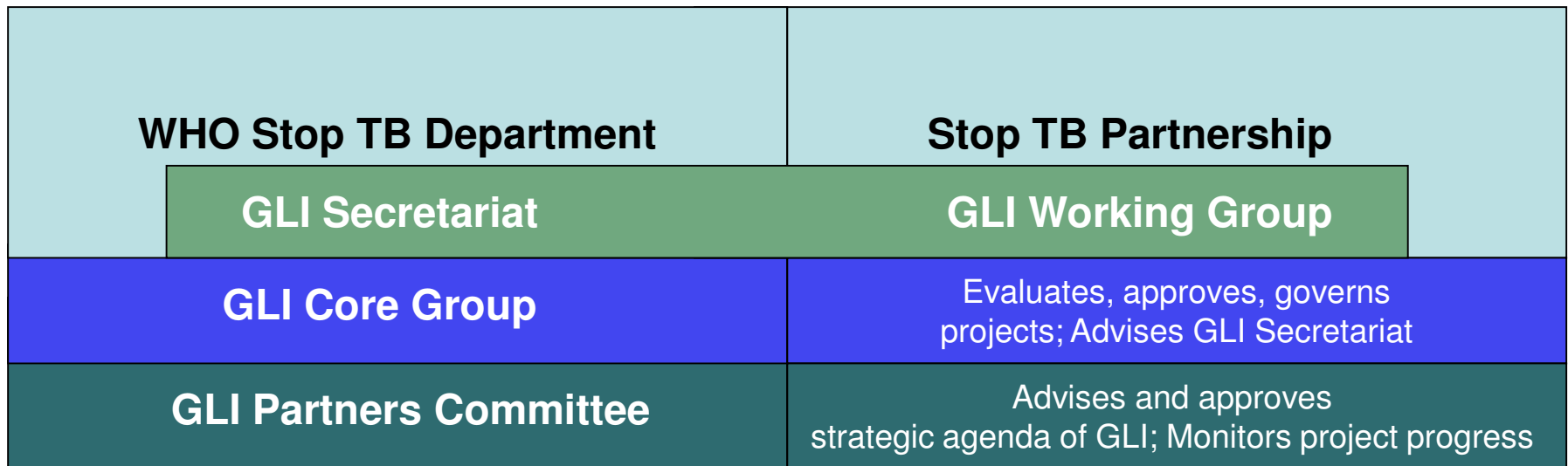
---

- Accelerating evidence-based policy development on diagnostics and laboratory practices
- Promoting a structured framework/roadmap for TB laboratory strengthening within the context of national laboratory plans at country level
- Developing a comprehensive set of tools, norms and standards based on international standards and best-practice
- Advancing laboratory strengthening through global, regional and local partnerships
- Developing multi-level laboratory human resource strategies to address the capacity crisis
- Accelerating new diagnostics into countries

# GLI Projects are run on behalf of GLI and adhere to a collaborative spirit

- Aligned with strategic agenda and priorities
- Complementarity with other projects
- Liaison to GLI secretariate established
- Project review process established
- Adequate partner representation requirements satisfied
- Information networks utilized

# GLI structure & governance



# GLI Core Group

- **Chair - Rick O'Brien**
- **WHO Secretariat – Chris Gilpin**
- **CDC – Tom Shinnick (Vice-Chair)**
- **Union – Armand Van Deun**
- **PEPFAR – John Nkengasong/Heather Alexander (CDC/GAP)**
- **USAID – Amy Piatek/YaDiul Mukadi**
- **African Society for Laboratory Medicine – Giorgio Roscigno**
- **Civil society – Vijay K. Gupta/Tom Otwoma**
- **Satoshi Mitarai (NTP/NRLJapan)**
- **Dick van Sooligen (NTP/NRL Netherlands)**
- **Marie Alice Telles (NTP/NRL Brazil)**
- **Rumina Hasan (Pakistan)**
- **Alexander Golubhov, PIH Boston**
- **Sara Eyangoh, NRL Cameroun**
- **Sabine Ruesch-Gerdes – NRL Borstel, Chair SRLN Sub-group**
- **Past Chair - John Ridderhof**
- **Observers**
- **Liaisons with other WGs**





# GLI Partners

- American Society for Microbiology (ASM)
- African Society for Laboratory Medicine (ASLM)
- Association of Public Health Laboratories (APHL)
- Bill & Melinda Gates Foundation
- Centers for Disease Control and Prevention (CDC)
- CDC Global AIDS Programme (GAP)
- Fondation Merieux
- Foundation for Innovative New Diagnostics (FIND)
- International Union Against TB and Lung Disease
- PEPFAR
- USAID
- KNCV
- Merieux Alliance
- Management Sciences for Health (MSH)
- Medecins Sans Frontiers
- Stop TB Partnership Working Groups (New Diagnostics, MDR-TB, DOTS Expansion/INAT)
- National TB Programs
- WHO
- UNITAID
- *and growing...*



# Key Achievements of GLI

(to be presented during this meeting)

- TB Lab Biosafety Manual (Tom Shinnick)
- Stepwise Implementation Towards Accreditation (Chris Gilpin, Paul Klatser)
- AFB Laboratory Network Accreditation (Armand van Deun)
- Revised guidance on DST (Faud Mirzayev)
- SRLN and DST EQA Expansion (Sabine Reusch-Gerdes)
- Expand TB (Eric Adam)



# WHO/GLI Policy Framework for Implementing New Diagnostics

- Intended to provide comprehensive guidance to NTRLs on introduction of new WHO-approved TB diagnostic technologies at differing levels of service together with specimen referral and reporting mechanisms
- Diagnostic testing algorithms for microscopy, culture and DST, and molecular testing for TB and DR TB



# GLI Laboratory Toolbox

- Roadmap for laboratory strengthening
  - To assist countries in developing national laboratory strategic plans
  - Comprehensive guidance on setting objectives, lab network structure, equipment, data management, human resources, and financial resources
- 37 training modules on biosafety, use and maintenance of equipment, preparation of reagents, and WHO approved laboratory procedures
- Logistics supply management tool
- External quality assurance package
- Management information system
- Linkages to other training materials, guidance documents and partner websites



# GLI Consultants Roster

- Promote and disseminate GLI strategic priorities and activities:
  - Policy guidance on appropriate TB laboratory technologies, infrastructure and biosafety, and best-practices;
  - Laboratory capacity development, including technology transfer and know-how, monitoring and evaluation, and quality improvement;
  - Interface with other laboratory networks to facilitate integration;
  - Human resource development, including training and mentoring.
- Support countries in developing TB laboratory strengthening plans;
- Guide countries in implementing WHO policies for TB diagnosis;
- Assist countries in preparing Global Fund applications containing adequate and appropriate laboratory strengthening components;
- Support development and expansion of country TB laboratory networks with linkage to the SRLN
- Promote interaction and collaboration with laboratory stakeholders at national and regional levels.



# Global Laboratory Initiative Looking Toward the Future

- Review strategic priorities importantly HR development
- Fully engage current GLI members and partners in its work and expand individual and constituent membership in GLI
- Promote the integration of TB laboratory services within public health laboratories and expand role of GLI in overall context of health systems strengthening
- Improve coordination and harmonization of technical assistance for TB laboratory strengthening at the country level
- Ensure full participation of GLI in other STB Partnership WGs
- Advocacy and resource mobilization for strengthening TB laboratory services and support for GLI Secretariat

