

Twenty years since birth of child TB working group in Paris

If I have seen further than others, it is
by standing upon the shoulders of giants.
Isaac Newton



Short course chemotherapy for childhood tuberculosis

J Biddulph¹

Affiliations:

Affiliation

¹ Department of Child Health, University of Papua New Guinea, Medical Faculty, Boroko.

INT J TUBERC LUNG DIS 8(4):392-402
© 2004 IUATLD

STATE OF THE ART

The natural history of childhood intra-thoracic tuberculosis: a critical review of literature from the pre-chemotherapy era

B. J. Marais,* R. P. Gie,* H. S. Schaaf,* A. C. Hesselning,* C. C. Obihara,* J. J. Starke,[†] D. A. Enarson,[‡] P. R. Donald,* N. Beyers*

ORIGINAL ARTICLE

Outcome of HIV infected children with culture confirmed tuberculosis

A C Hesselning, A E Westra, H Werschull, P R Donald, N Beyers, G D Hussey, W El-Sadr, H Simon Schaaf

.....
Arch Dis Child 2005;90:1171-1174. doi: 10.11

INT J TUBERC LUNG DIS 6(5):424-431
© 2002 IUATLD

Childhood tuberculosis in Malawi: nationwide case-finding and treatment outcomes

A. D. Harries,* N. J. Hargreaves,** S. M. Graham,^{‡§} C. Mwansambo,[¶] P. Kazembe,[¶] R. L. Broadhead,[§] D. Maher,** F. M. Salaniponi*

* National Tuberculosis Control Programme, Community Health Science Unit, Private Bag 65, Lilongwe, Malawi; [†] Liverpool School of Tropical Medicine, Liverpool, UK; [‡] Wellcome Trust Research Laboratories, Blantyre, [§] Department of Paediatrics, College of Medicine, Blantyre, [¶] Paediatric Department, Lilongwe Central Hospital, Lilongwe, Malawi; ** Stop TB Department, World Health Organization, Geneva, Switzerland

SUMMARY

SETTING: All 43 non-private hospitals (three central, 21 district and 19 mission) in Malawi that register and treat those aged 1-4 years and 33/100 000 in those aged 5-14 years. A significantly higher proportion of TB cases was

INT J TUBERC LUNG DIS 10(7):732-738
© 2006 The Union

UNRESOLVED ISSUES

The spectrum of disease in children treated for tuberculosis in a highly endemic area

B. J. Marais,* R. P. Gie,* H. S. Schaaf,* A. C. Hesselning,* D. A. Enarson,[†] N. Beyers*

* Desmond Tutu TB Centre and Department of Paediatrics and Child Health, Tygerberg Children's Hospital, Stellenbosch University, Cape Town, South Africa; [†] International Union Against Tuberculosis and Lung Disease, Paris, France

HIV/AIDS MAJOR ARTICLE

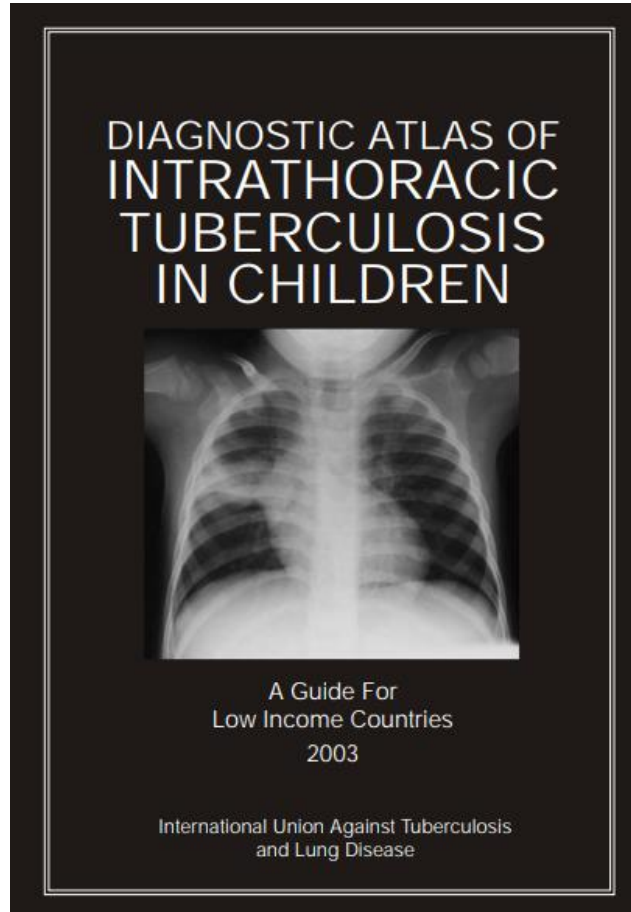
Danish Bacille Calmette-Guérin Vaccine-Induced Disease in Human Immunodeficiency Virus-Infected Children

A. C. Hesselning,¹ H. S. Schaaf,¹ W. A. Hanekom,² N. Beyers,¹ M. F. Cotton,¹ R. P. Gie,¹ B. J. Marais,¹ P. van Helden,² and R. M. Warren²

Diagnostic atlas of intrathoracic tuberculosis in children:

a guide for low-income countries 2003.

Robert Gie, IUATLD



Freely available on-line

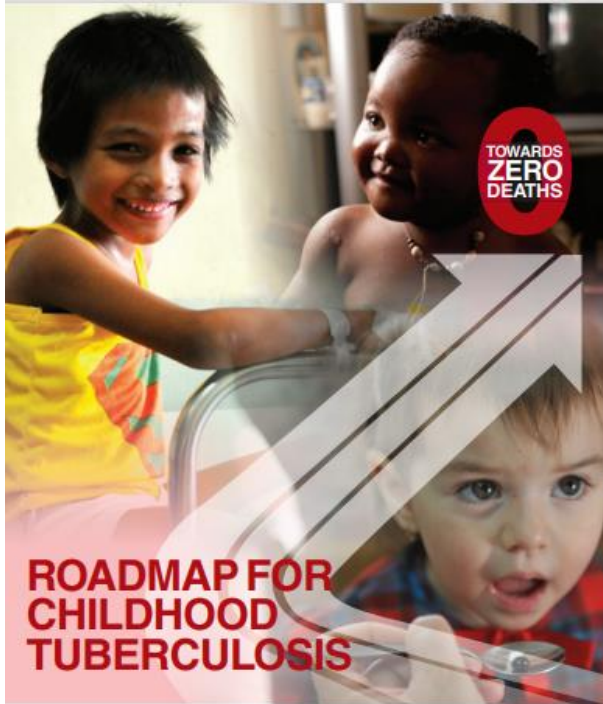
<http://www.theunion.org/index.php/en/component/flexicontent/items/item/110-diagnostic-atlas-of-intrathoracic-tuberculosis-in-children>

Comparative Study

> *Acta Paediatr.* 2006 May;95(5):523-8. doi: 10.1080/08035250600675741.

Childhood drug-resistant tuberculosis in the Western Cape Province of South Africa

H Simon Schaaf¹, Ben J Marais, Anneke C Hesseling, Robert P Gie, Nulda Beyers, Peter R Donald



Eur Respir J 2012; 40: 294–297
 DOI: 10.1183/09031936.00187711
 Copyright © ERS 2012
 ERJ Open articles are open access and distributed under the terms of the Creative Commons Attribution Licence 3.0

PERSPECTIVE

Childhood tuberculosis: progress requires an advocacy strategy now

Andreas Sandgren, Luis E. Cuevas, Masoud Dara, Robert P. Gie, Malgorzata Grzemska, Anthony Hawkridge, Anneke C. Hesselring, Beate Kampmann, Christian Lienhardt, Davide Manissero, Claire Wingfield and Stephen M. Graham

Childhood Tuberculosis Meeting 2011

Event

17 Mar 2011 - 18 Mar 2011

Piperska Muren Conference, Stockholm, Sweden

ECDC together with the childhood TB subgroup of the Stop TB Partnership



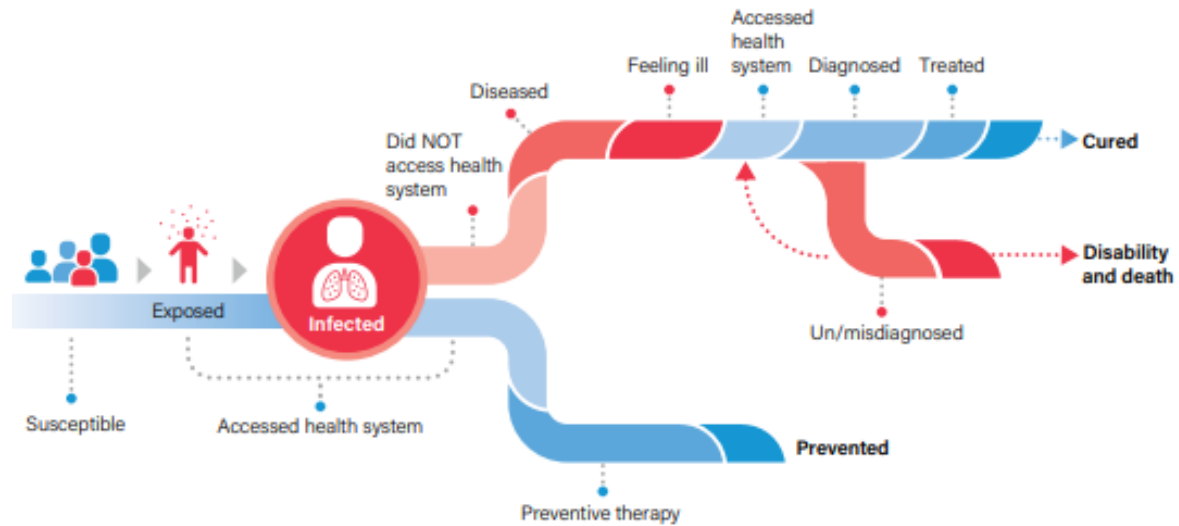
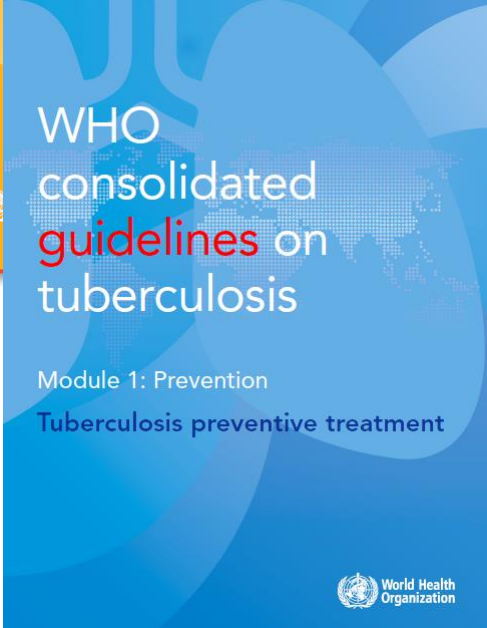
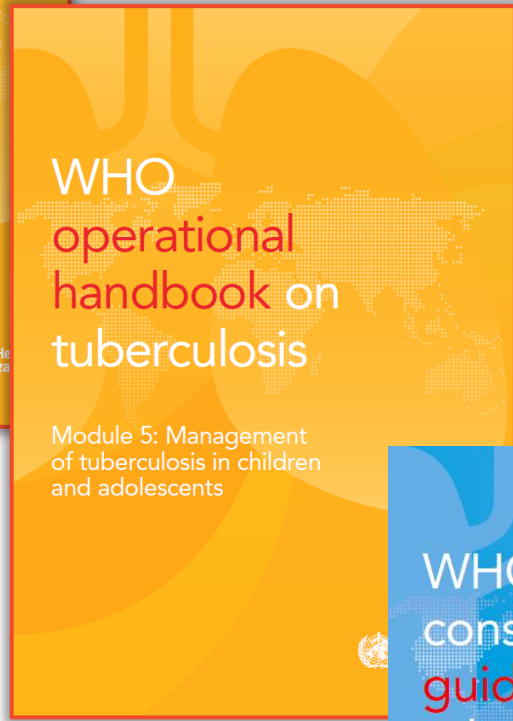
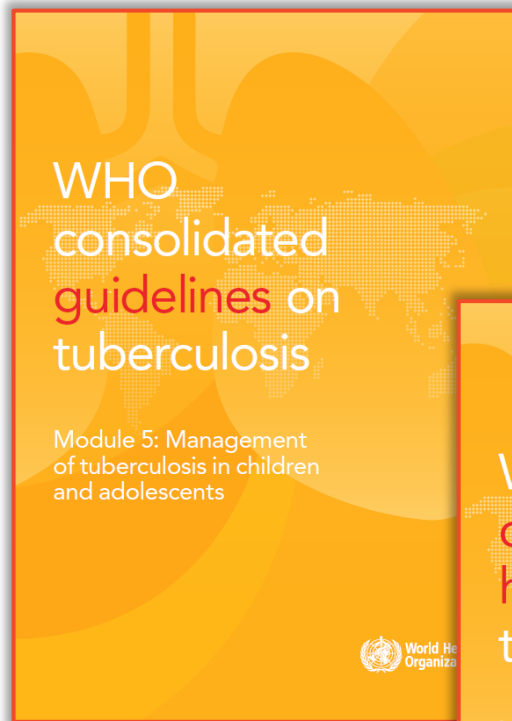
Guidance for national tuberculosis programmes on the management of tuberculosis in children

Second edition

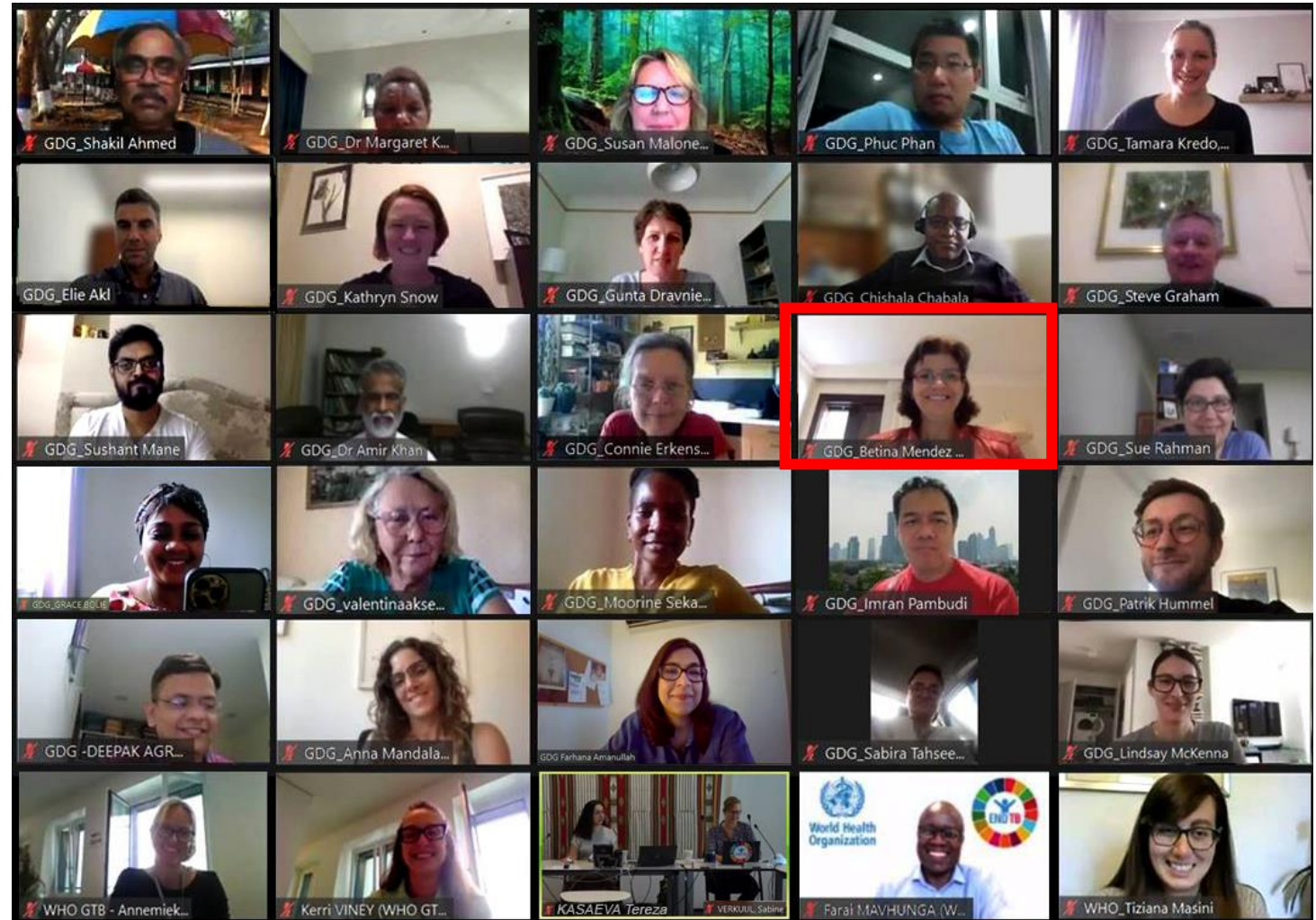




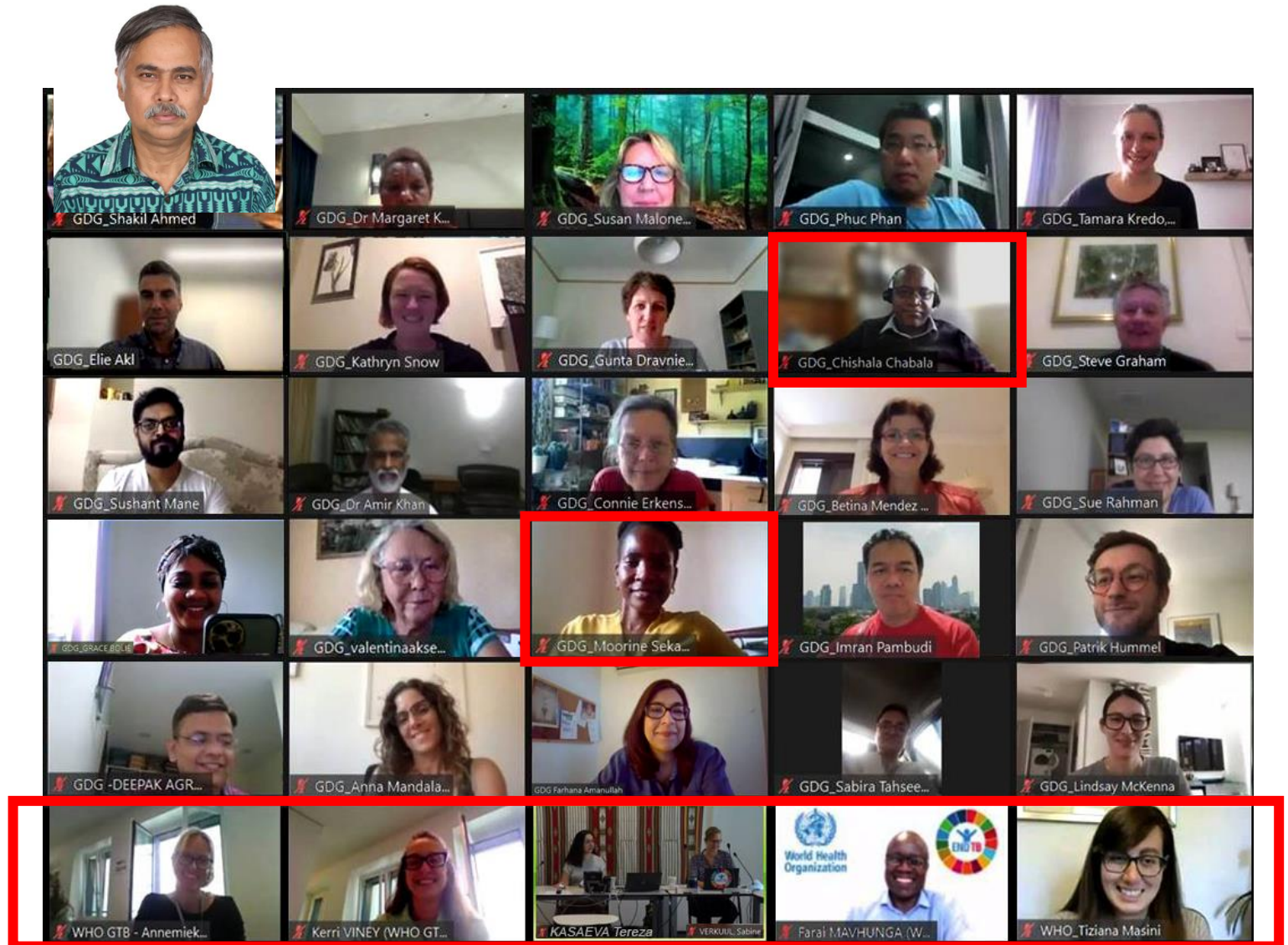
Roadmap towards ending TB in children and adolescents



The leadership, the support and the people



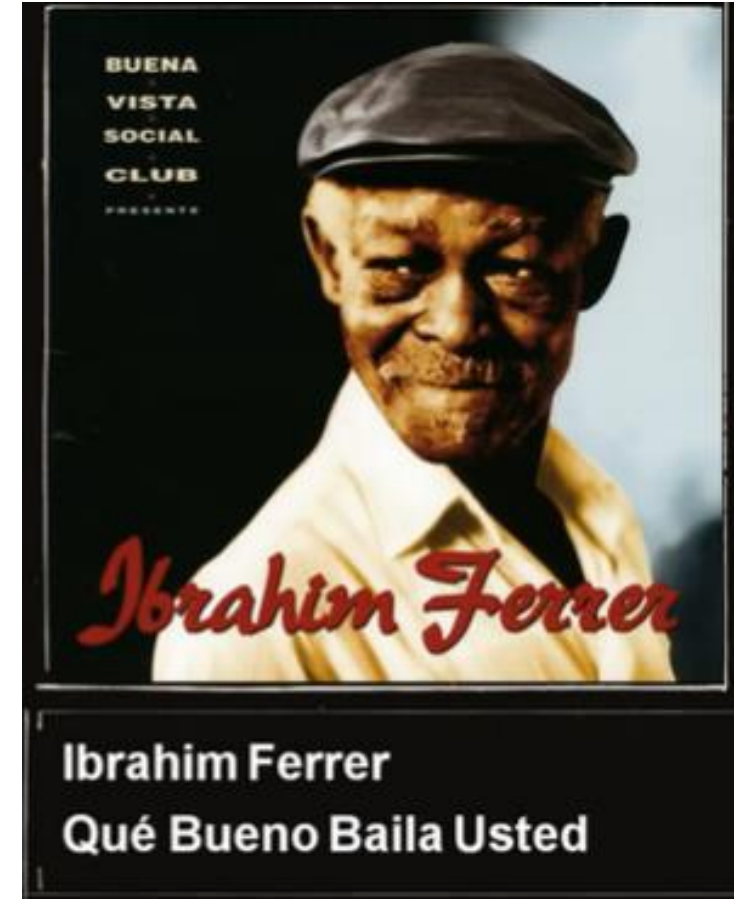
The leadership, the support and the people





Evaluation of Tuberculosis Diagnostics in Children: 2. Methodological Issues for Conducting and Reporting Research Evaluations of Tuberculosis Diagnostics for Intrathoracic Tuberculosis in Children. Consensus From an Expert Panel^a

Luis E. Cuevas,¹ Renee Browning,² Patrick Bossuyt,³ Martina Casenghi,⁴ Mark F. Cotton,⁵ Andrea T. Cruz,⁶ Lori E. Dodd,⁷ Francis Drobniowski,⁸ Marianne Gale,⁹ Stephen M. Graham,¹⁰ Malgosia Grzemska,¹¹ Norbert Heinrich,¹² Anneke C. Hesselning,¹³ Robin Huebner,¹⁴ Patrick Jean-Philippe,² Sushil Kumar Kabra,¹⁵ Beate Kampmann,^{16,17} Deborah Lewinsohn,¹⁸ Meijuan Li,¹⁹ Christian Lienhardt,¹¹ Anna M. Mandalakas,²⁰ Ben J. Marais,²¹ Heather J. Menzies,²² Grace Montepiedra,²³ Charles Mwansambo,²⁴ Richard Oberhelman,^{25,26} Paul Palumbo,²⁷ Estelle Russek-Cohen,²⁸ David E. Shapiro,²³ Betsy Smith,²⁹ Giselle Soto-Castellares,³⁰ Jeffrey R. Starke,⁶ Soumya Swaminathan,³¹ Claire Wingfield,³² and Carol Worrell³³



TB Speed – over 2000 children with severe pneumonia in five countries

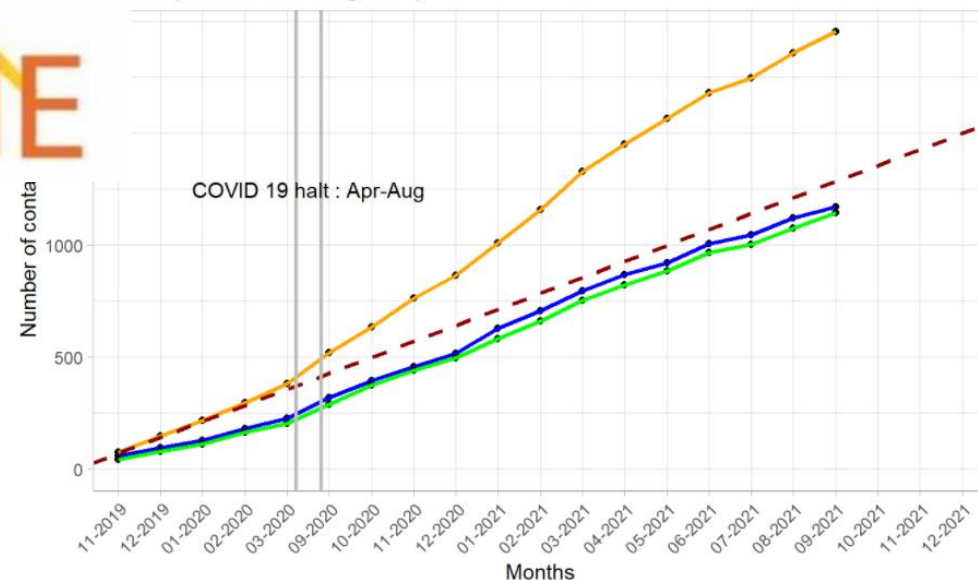
TB incidence Rate	Country	Hospital	period (5-week intervals)															
			20/03	24/04	29/05	03/07	07/08	11/09	16/10	20/11	25/12	29/01	04/03	07/10	11/11	16/12	20/01	
High	UG	Jinja	CT	INT	INT	INT	INT	INT	INT	INT	INT	INT	INT	INT	INT	INT		
Very high	KH	K. Cham	CT	CT	INT	INT	INT	INT	INT	INT	INT	INT	INT	INT	INT	INT		
High	CI	Treichville	CT	CT	CT	INT	INT	INT	INT	INT	INT	INT	INT	INT	INT	INT		
Very high	ZM	Ndola	CT	CT	CT	CT	INT	INT	INT	INT	INT	INT	INT	INT	INT	INT		
High	CM	B. Assi	CT	CT	CT	CT	CT	INT	INT	INT	INT	INT	INT	INT	INT	INT		
Very high	MZ	Central	CT	CT	CT	CT	CT	CT	INT	INT	INT	INT	INT	INT	INT	INT		
High	CI	Cocody	CT	CT	CT	CT	CT	CT	INT	INT	INT	INT	INT	INT	INT	INT		
Very high	ZM	Lusaka	CT	CT	CT	CT	CT	CT	CT	INT	INT	INT	INT	INT	INT	INT		
High	UG	Mulago	CT	CT	CT	CT	CT	CT	CT	CT	INT	INT	INT	INT	INT	INT		
Very high	KH	Takeo	CT	CT	CT	CT	CT	CT	CT	CT	CT	INT	INT	INT	INT	INT		
High	UG	Holy Inn.	CT	CT	CT	CT	CT	CT	CT	CT	CT	CT	INT	INT	INT	INT		
Very high	KH	NPH	CT	CT	CT	CT	CT	CT	CT	CT	CT	CT	CT	INT	INT	INT		
High	CM	CME/FCB	CT	CT	CT	CT	CT	CT	CT	CT	CT	CT	CT	INT	INT	INT		
Very high	MZ	J.Macamo	CT	CT	CT	CT	CT	CT	CT	CT	CT	CT	CT	CT	INT	INT		
High	CI	Angré	CT	CT	CT	CT	CT	CT	CT	CT	CT	CT	CT	CT	CT	INT		

01/04-01/10:
Covid break

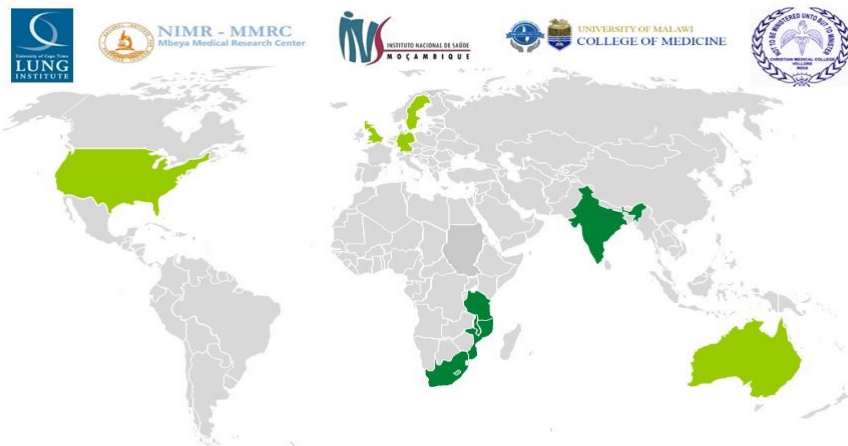


CONTACT – cluster randomized trial of decentralized child contact management

bal (Cameroon & Uganda)



Anneke C. Hesseling
Director - Distinguished
Professor in Paediatrics and
Child Health



“The biggest difference since we set out on this journey is the scientific basis for childhood TB that has been established. In the early days we were advocates with minimal data. This can no longer be held against the childhood TB group.”

Desk-guide for diagnosis and management of TB in children



Management of Multidrug-Resistant Tuberculosis in Children: A Field Guide



Second Edition, March, 2015

Phát hiện sớm VÀ PHÒNG BỆNH LAO CHO TRẺ EM

❖ **TRẺ EM CÓ NGUY CƠ MẮC BỆNH LAO KHI**

- Trẻ sống cùng nhà với người mắc bệnh lao phổi.
- Trẻ có HIV.
- Trẻ suy dinh dưỡng.
- Trẻ sống trong môi trường ô nhiễm, nhà ở không thông thoáng.

❖ **KHI TRẺ EM CÓ MỘT TRONG CÁC TRIỆU CHỨNG NGHI MẮC BỆNH LAO NHƯ:**

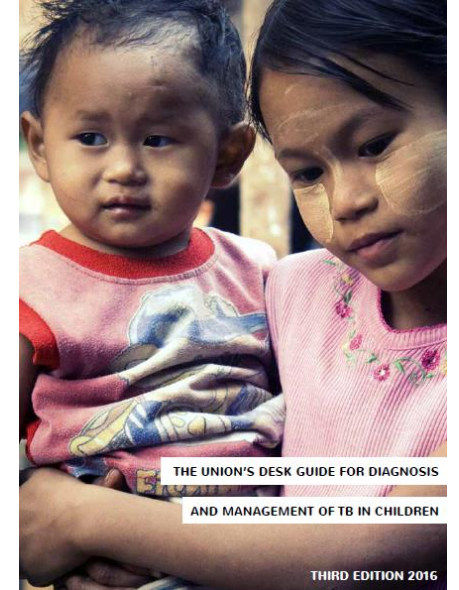
- Ho, thở khò khè dai dẳng được điều trị bằng kháng sinh không khỏi.
- Sốt kéo dài.
- Sút cân hoặc không tăng cân.
- Đổ mồ hôi ban đêm....

Hãy chuyển trẻ đến Tổ chống lao quận/huyện để khám và điều trị bệnh lao miễn phí.

❖ **PHÒNG BỆNH LAO CHO TRẺ EM BẰNG CÁCH:**

- Tiêm vắc xin phòng bệnh lao cho trẻ sơ sinh.
- Điều trị dự phòng bằng Rimifon cho trẻ em dưới 5 tuổi và trẻ em có HIV sống cùng người mắc bệnh lao phổi, ngay từ khi các cháu còn chưa mắc bệnh lao.

USAID TB CARE I KNCV To eliminate TB



COE "Workshop series for strengthening capacity to manage child and adolescent TB"

Session 3: Adapting or developing a national capacity building strategy for child and adolescent TB, incorporating best practices for adult learning

Date: Tuesday 14 June 2022
Moderator: John Paul Dongo



#END TB Channel
E-LEARNING COURSE ON
RAPID DIAGNOSTICS FOR
TUBERCULOSIS DETECTION



#END TB Channel
E-LEARNING COURSE ON
TB PREVENTIVE
TREATMENT



#END TB Channel
E-LEARNING COURSE ON
DRUG-RESISTANT TB
TREATMENT



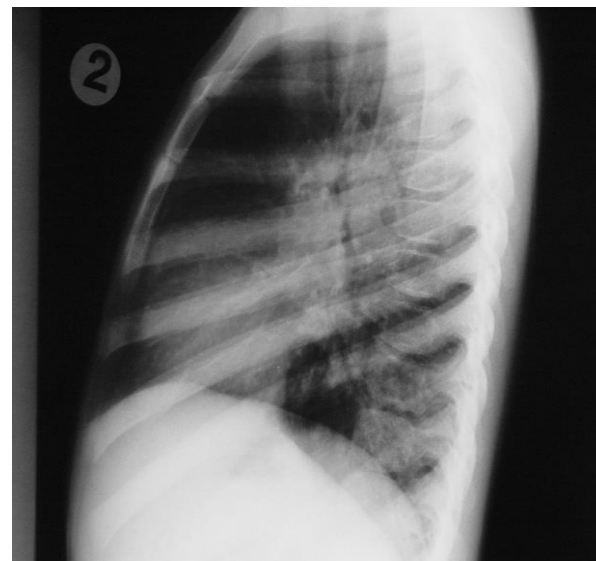
The Union

International Union Against
Tuberculosis and Lung Disease

DIAGNOSTIC CXR ATLAS FOR TUBERCULOSIS IN CHILDREN

A guide to chest X-ray interpretation

Second Edition
2022



The Union

Сурьээ, Уушгины Өвчинтэй тэмцэх
Олон Улсын Холбоо

ХҮҮХДИЙН СҮРЬЕЭГ ОНОШЛОХ ЦЭЭЖНИЙ РЕНТГЕН ЗУРГИЙН АТЛАС

Цээжний рентген зураг унших гарын авлага

Хоёр дахь хэвлэл
2022





Ficus natalensis

“The beautiful growth of this tree is symbolic of what has happened to childhood TB.” *Robert Gie*



Commonly known as the **natal fig** in South Africa.

In central and western Uganda, it has important cultural value and is known as **omutuba** to the Baganda people