

PEPFAR and Laboratory Integration

John Nkengasong, PhD

Chief, International Laboratory Branch
Global AIDS Program
CDC Atlanta, GA

Laboratory System Strengthening Allocations by the Global Fund and PEPFAR

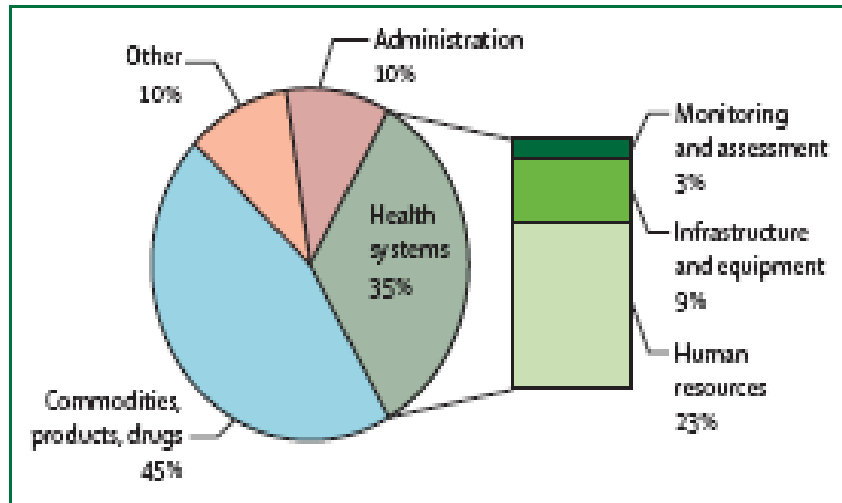


Figure 1: Direct funding of health systems through Global Fund grants

Global Fund for AIDS, TB, Malaria

Piot P et al 2009

PEPFAR II \$500 M in 2009

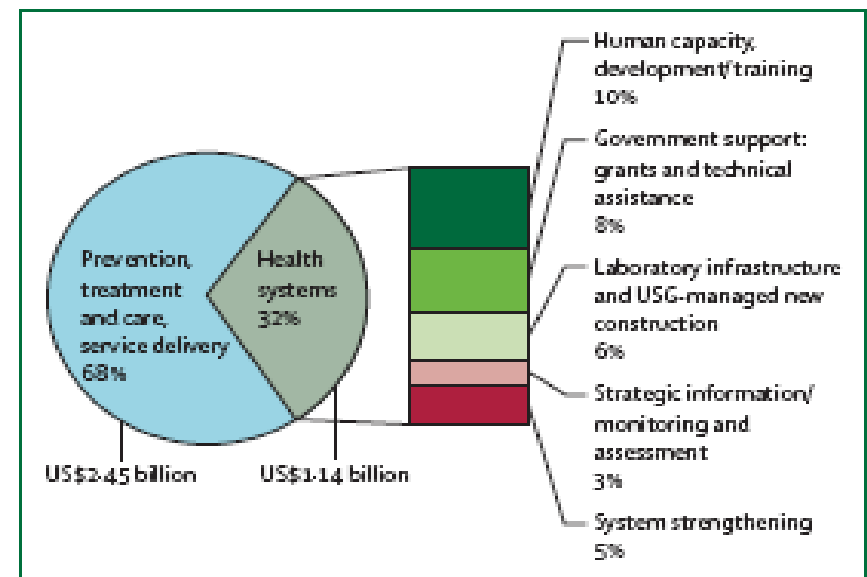
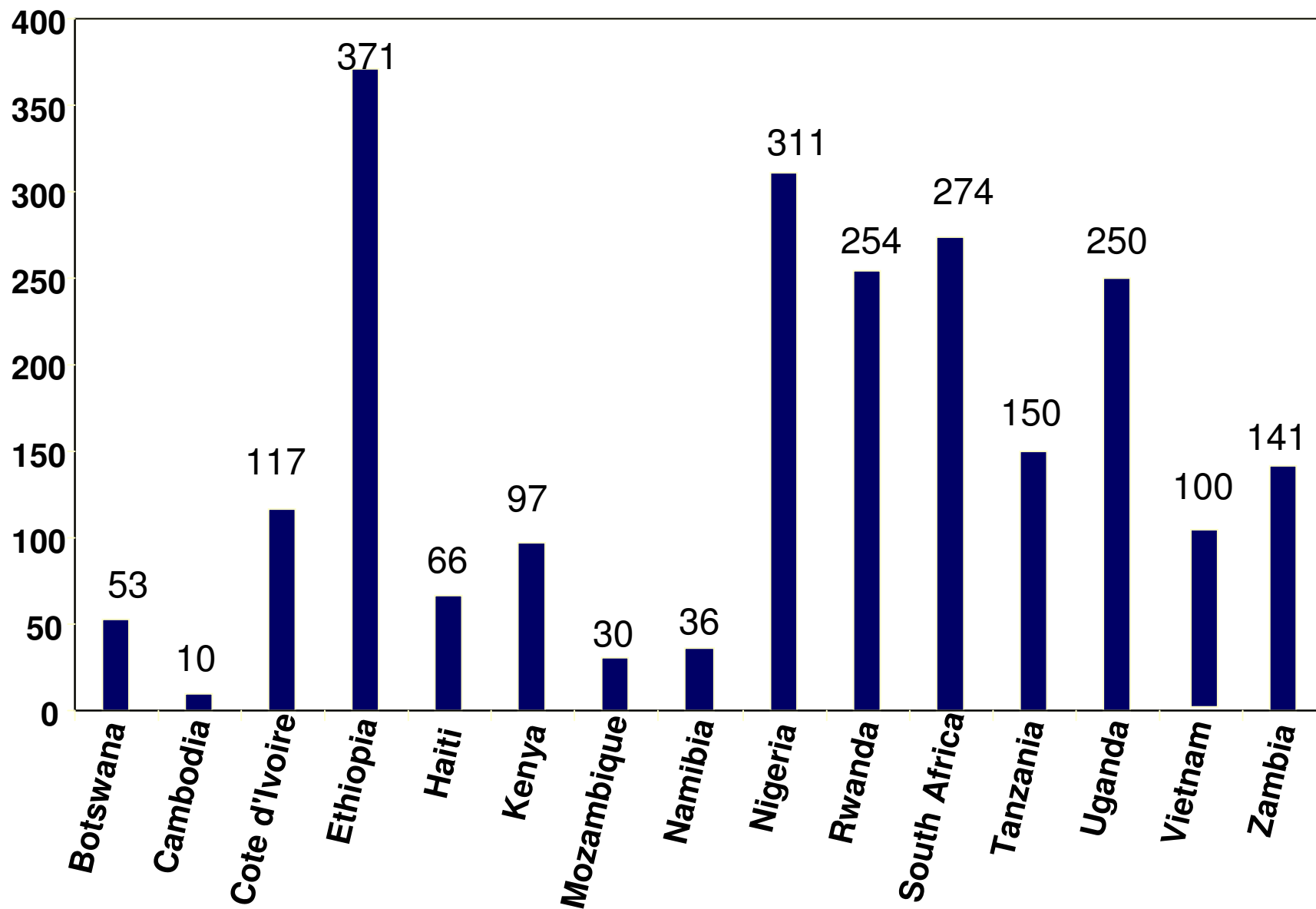


Figure 2: PEPFAR planned investments in health-systems-related programmes and bilateral programme support in 15 countries in 2009

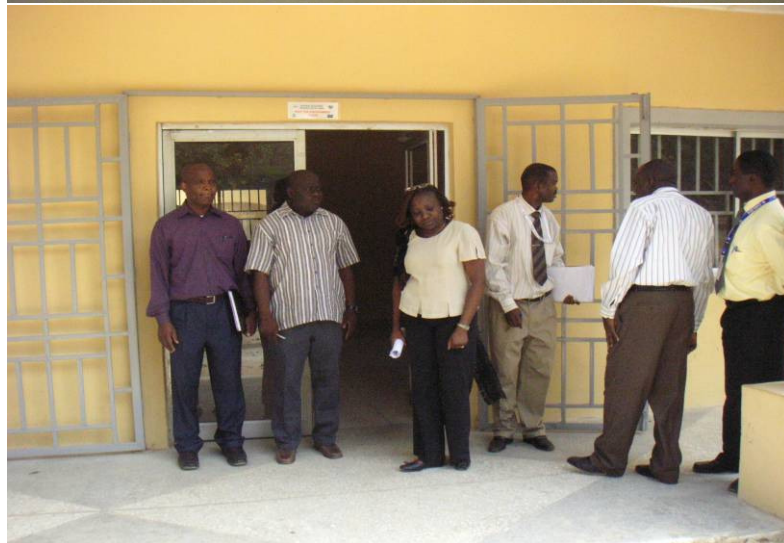
Number of PEPFAR-Supported Laboratories in Selected Countries as of September 2008 (N= 1,917)



PEPFAR Laboratory Program is a Critical part of Health Systems Strengthening

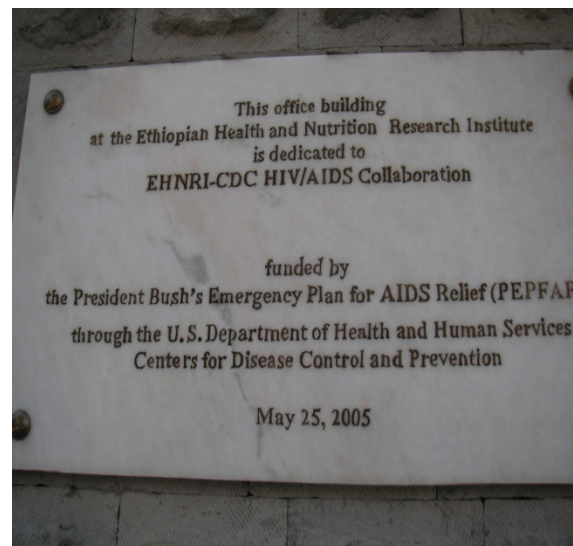
Mission: To support countries to strengthen sustainable, integrated laboratory systems to provide quality diagnostic services for effective implementation of prevention, surveillance and treatment programs across diseases (HIV, TB, Malaria, OIs)

TB, HIV, Malaria - Integrated Training Center, Zaria, Nigeria



Strengthened Laboratory Infrastructure for HIV/AIDS is being use to combat other diseases

Reference Laboratory for HIV, TB, AI
and Malaria



African Centre for Integrated Laboratory Training at NHLS/NICD Johannesburg

Vision

- A healthier Africa through quality laboratory practices that support efforts to combat major infectious diseases

Mission

- To provide integrated hand-on training courses to expand laboratory capacity in Africa for diagnosis and monitoring of major infectious diseases including HIV, TB and malaria



ACILT
The African Centre for
Integrated Laboratory
Training

Building Laboratory Capacity throughout Africa

Funded by the U.S. President's Emergency Plan for AIDS Relief (PEPFAR)

The graphic features a central red map of Africa with a white border. Two inset photographs show laboratory workers: a man in a white lab coat holding a test tube and a woman in a white lab coat looking at a device. Logos for the CDC (Centers for Disease Control and Prevention), the National Health Laboratory Service (NHLS), and the National Institute for Communicable Diseases (NICD) are displayed at the bottom right. The text 'Funded by the U.S. President's Emergency Plan for AIDS Relief (PEPFAR)' is at the bottom.

Dakar WHO AFRO meeting to Public Health Lab Network - Stepwise WHO-AFRO Accreditation



Health organizations launch new lab accreditation process
Government and health officials from across Africa meet



BUSINESS DAILY



THE NEWTIMES
Rwanda's First Daily



advance
www.advanceweb.com



NEWS IN BRIEF

Step-by-step rating system set to improve African labs

An accreditation system that aims to raise the standard of disease diagnosis in African medical laboratories was launched on 27 July in Kigali, Rwanda.

The process, developed by the World Health Organization in collaboration with the US government, will mark African pathology labs on an incremental scale, upping the rating as their quality improves rather than using the 'pass or fail' system of many developed countries. The scheme was launched alongside a training programme for African lab workers.

The US Centers for Disease Control and Prevention in Atlanta, Georgia, which will implement the step-by-step system, estimates that it could see 60 currently

AM. SOC. CLIN. PATHOL.



The number of accredited labs in Africa may rise.



The Maputo Declaration on Strengthening of Laboratory Systems

Call on national governments to support laboratory systems as a priority by developing a national laboratory policy within the national health development plan that will guide the **implementation of a national strategic laboratory plan. Governments should establish a department of laboratory systems within the Ministry of Health.**

Call on national governments with support of their donors and partners in resource-limited settings to develop national strategic laboratory plans that **integrate laboratory support for the major diseases of public health importance including HIV, tuberculosis, and malaria.**